

Hippos (Sussita) Excavations 2011 – 12th Season Daily Log + Drawing

Date: 25 July 11 Area: NIP Manager: Schuler

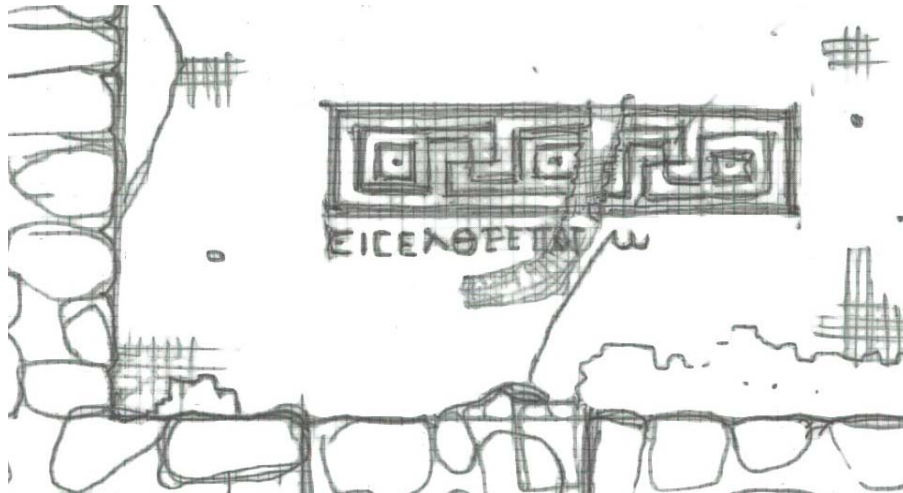
Squares	G9	YY0	XXYY0
Loci	1893	1918	1938
Baskets	2456	2457	2458
Walls	1252, 2007		
Floors	1939		

1) Northeast Zone

a) Continued work in Square XX/yy0.

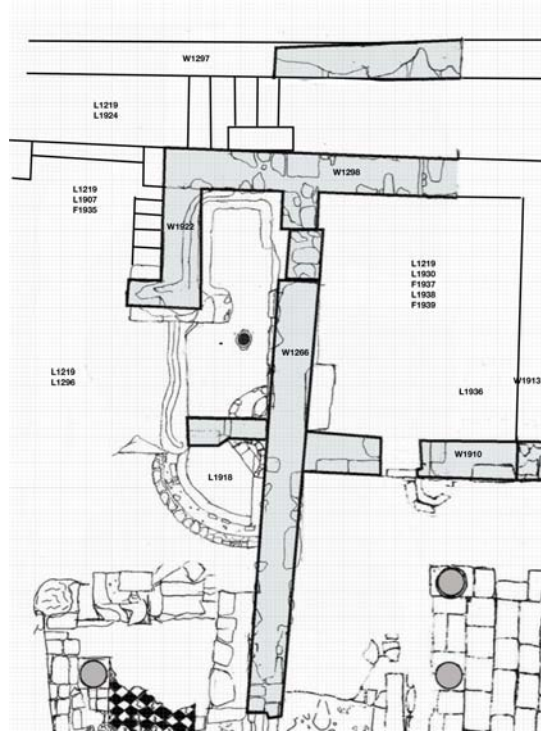
- (1) Goal = Excavate NE hall of peristyle house
- (2) Basket = 2457 (Medium sized pieces of jars and pipes; probably erosion material and pipes from the fountain)
- (3) Basket = 2458
- (4) Starting elevation = 130.08 (top of channels), 129.84 (mosaic)
- (5) Ending elevation = 129.84
- (6) Concordia workers cleaned mosaic (F1939) and decorative band.
- (7) Conservators from Haifa worked to stabilize the edge of the mosaic.
- (8) Diameter of the pipes: internal diameter of the pipe at the blocked doorway 11cm, south channel internal diameter 7.5 cm. Combined channel is 12 cm.
- (9) Description of the mosaic (elevation 129.82)
 - (a) Decorative band = 1.74x.36
 - (b) First decorative piece starts with 4 over 3 black block and then a double row of white, a double row of black, a double row of white, a double row of black, a double row of white, a double row of black
 - (c) The second row of black from the outside forms into a left facing compound swastika the base which forms the frame for the next iteration of the pattern. Other iterations of the pattern have 2x2 black in the center, only the left pattern has 4 little and 3 large tesserae
 - (d) The inscription is .96 meters in length. The letters are 5.5-6.5 cm tall

- (e) The repair band goes between the second box and the second swastika and takes out the alpha and part of the theta in the inscription. It's 10-16cm wide. It starts 10 cm below the lambda of the inscription and curves to about 26 cm above the inscription the mosaic was cut about 2 meters south of the north wall.



b) Continued work in the fountain.

- (1) Goal = Excavate the rest of the pool of the fountain
- (2) Ending elevation of the bottom of the pool = 128.65; interior shelf = 128.96
- (3) Finished excavation of the pools of the fountain
- (4) The fountain is 110 cm deep with an interior shelf 78cm below the top of the pool
- (5) The pool is 144 x 141 at the top and 110 x 109 in the bottom. The bottom curve to corner measurement is 114. The interior shelf is 32 cm above the bottom.
- (6) From the top of the marble slab onto which the water splashed from the fountain to the bottom of the pool is 115 cm.
- (7) The base of the pool is limestone slabs. There is a 54 x 73 slab in the corner of the pool. Other slabs seem to go under the pool walls.



2) Continued work in Square G9.

- i) Goal = Excavate NW room of alpha complex
- ii) Basket = 2456
- iii) Starting elevation = 129.08
- iv) Ending elevation = 128.78
- v) Soil is Horizon A.
- vi) Cut a trench to expose part of the first course of the north side of W2007. No doorway is evident, although there may be a blocked doorway next to W1252/W1265.
- vii) Dug through fill to the level of some grass. We have thus removed what was dumped into the room to create a bridge, at least on the eastern half. Proceeded a bit lower. If the floor of this room is similar to the southwest room (127.89), we are less than a meter (89 cm) from the floor.
- viii) Small finds include a hook eye (#597, Length of shank: 6 cm, Width: of shank: 1.5 cm, Outer edges of eye diameter: 2.5 cm, Inner edges of eye diameter: 1 cm) and two rings (#598, Diameter of outer edges: 5 cm, Diameter of inner edges: 3.5

cm, Thickness: .7 cm; and #599, Diameter of outer edges: 6.5 cm, Diameter of inner edges: 5 cm, Thickness: 1 cm).

